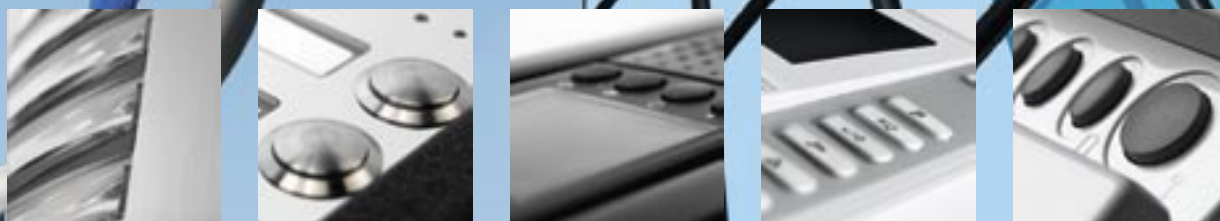


Two-wire video entry system with self-learning.  
Power supply included.



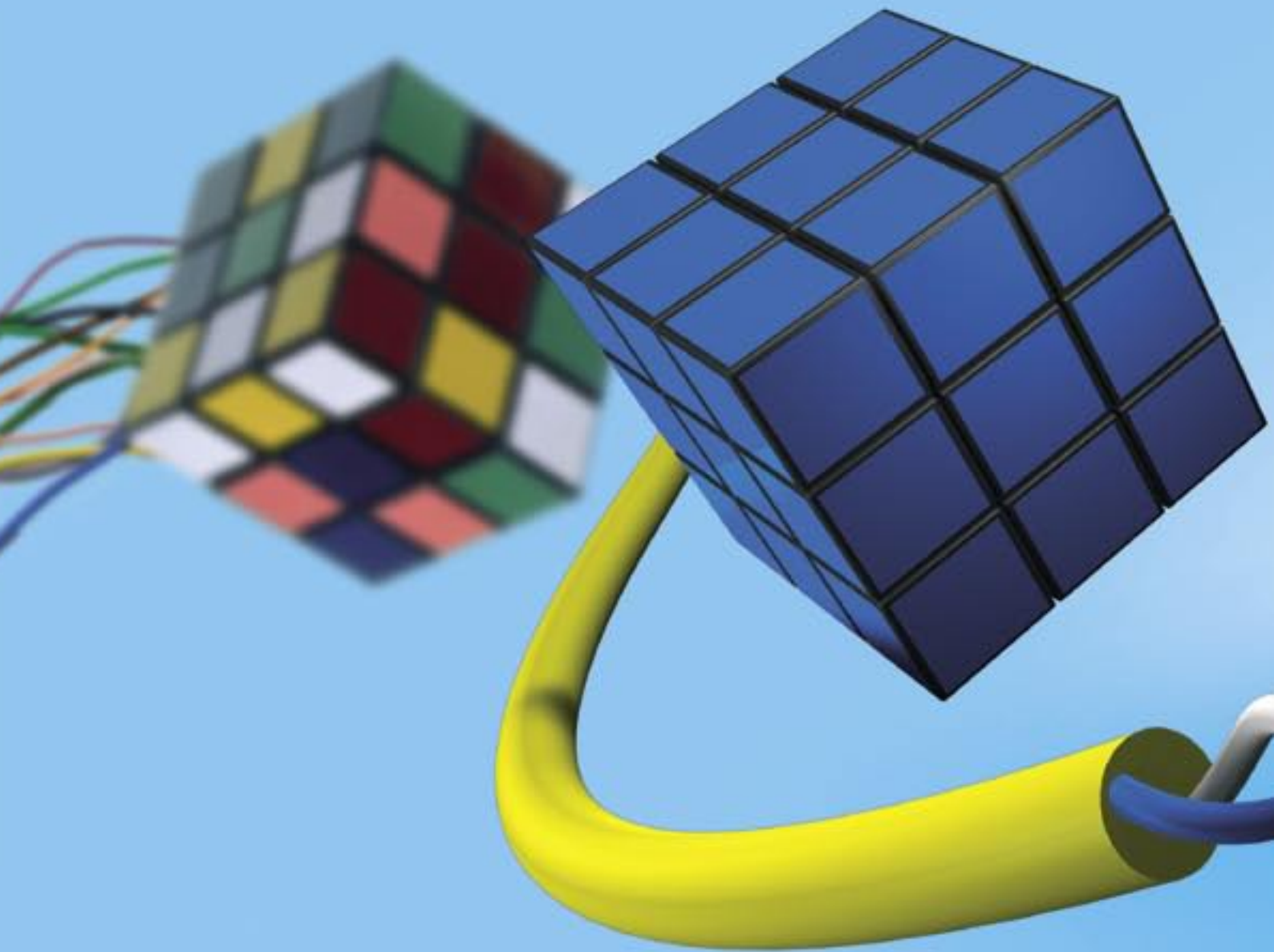
**Video entry system X1**

**bpt**  
technological sign

# Introducing x1, the 2-wire video entry control system



bpt *TECHNOLOGY*



# The advantages of a highly innovative system

X1 inherits a great technological tradition and an astounding wealth of features.

**Just two nonpolarized wires, power supply included,**

just one advantage after another:

installation is simpler,

quicker and more immediate.

**X1: ANOTHER STEP FORWARDS TOWARDS PERFECTION**





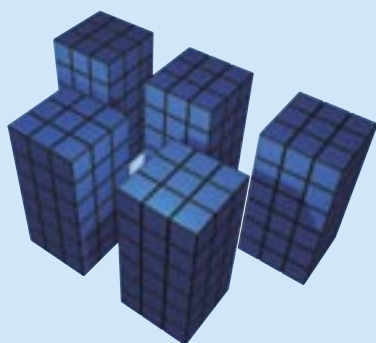
# Incredibly advanced, simpler than ever

## Technology



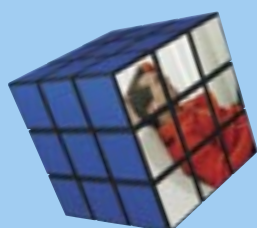
### **The X1 system**

The X1 handles 4 entrances, 100 calls, covers a distance of 650 meters between an external entry panel and the last receiver and can connect as many as 8 receivers on the same call.



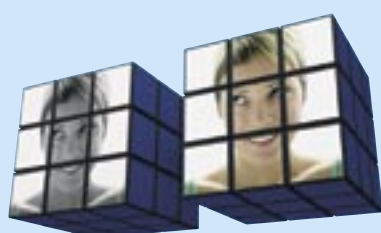
### **The Residential X1**

The X1 can expand its capacity so as to form multi-block residential complexes of up to 2,000 users in all.



### **Self-learning programming**

With X1, system programming is quick and immediate with no configurers or dip switches to contend with.



### **B&W and colour video signal**

X1 provides top audio-video quality and can handle B&W and COLOUR signals without distinction. Again with just 2 wires, power supply included.

## Intercom features

With X1 you can create one or more intercom groups of receivers without having to alter the riser line. It can handle several 8-intercom groups.



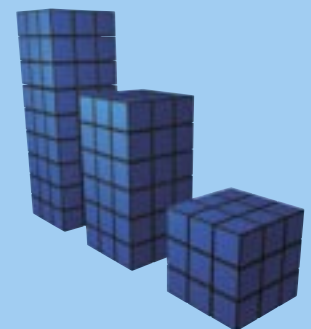
## Full optional

- Doorbell
- Door lock release feature
- Call waiting notification
- Door lock release time control
- Secrecy of speech
- Self-connection to entry panels
- System busy warning



## X1-300 expandability

X1 can expand its capacities to cater for multi-block residential complexes, with the aid of an XA/300LR control unit.



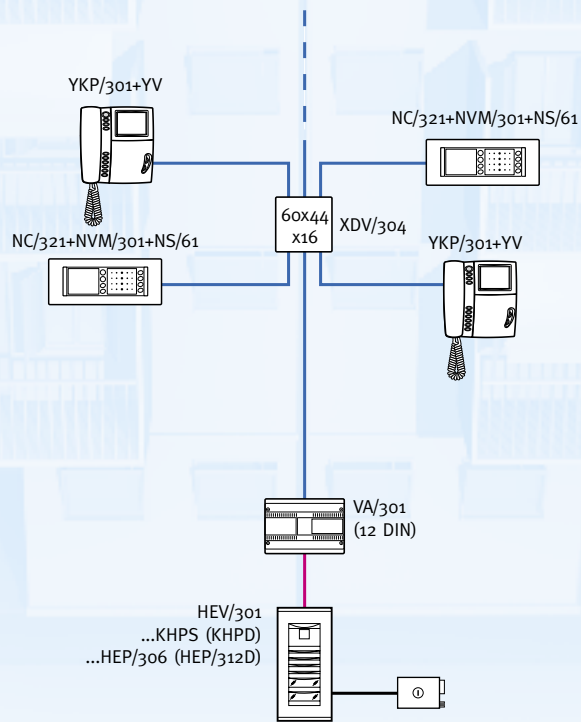
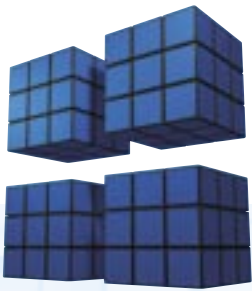
## Expandable kits

The X1 system kits can be employed to expand the video entry control installation by simply adding the necessary pushbutton entry panels and receivers.



# X1 system capacity

Video entry installation with 1 entry panel with traditional buttons and one video riser.



- VCM/1D
- VCM/2D

System composition	
Product	Quantity
YV	1-n
YKP/301	1-n
NVM/301	1-n
NC/321	1-n
NS/61	1-n
XDV/300A	0-2
XDV/304	1-n
VA/301	1
HEV/301	1
KHPS	0-1
HEP/306	0-n
KHPD	0-n
HEP/312D	0-n

System X1	
100	Internal receivers in total
4	Entry panels
650m	Maximum distance between external entry panels and last receiver
VA/301	One power supply unit can handle up to 64 internal receivers

YKP/301+YV

NC/321+NVM/301+NS/61

60x44 x16

XDV/304

YKP/301+YV

VA/301 (12 DIN)

HEV/301  
KHSO  
...KHPs (KHPD)  
...HEP/306 (HEP/312D)

XDV/304A (6 DIN)

VAS/100 (12 DIN)

XAV/300 (4 DIN)

XA/300LR (12 DIN)

ICB/300 (6 DIN)

RIR/300LR

60x44 x16

VPM/240U

IPD/300LR

HPV/1  
2 x HTS  
HAV/200  
HIA/300  
HAC/300LR

VCM/1D

VCM/2D

x1 Blocks

System 300

## 64 Main entry panels with porter

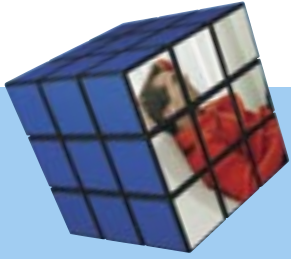
Article	Quantity
XDV/304A	1
XA/300LR	1
XAV/300	1
ICB/300	1
RIR/300LR	1
VAS/100	1
VPM/240U	1
IPD/300LR	1
HPV/1	1
HTS	2
HAV/200	1
HIA/300	1
HAC/300LR	1

# Self-learning programming





# X1 is a quick learner and never makes mistakes



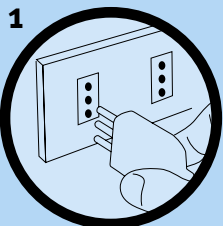
Programming of calls from the entry panel to receivers, carried out with the bpt self-learning system, is quick and error-proof. This operation, which requires no setting or configuring of dip switches, configurers or jumpers, is carried out with the

system working by sending the call from the entry panel to the relevant receiver directly.

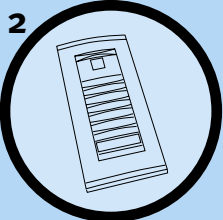
## Entry panel and call programming process:

Inside each audio-video or audio-only entry panel, there are two programming jumpers:

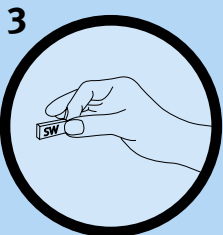
**SW1 = Entry panel detection - SW2 = Call programming**



Switch on the system;



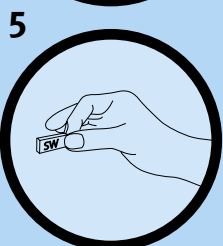
Go to the last entry panel, i.e. the last of the series in installations with more than one entrance, or the only entry panel if you have an installation with just one entrance.



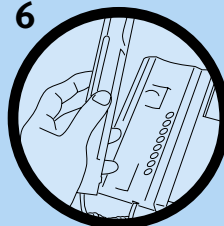
Remove jumper SW1;



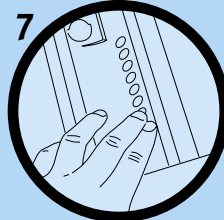
Wait for audible confirmation;  
Refit jumper SW1;



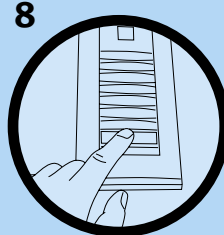
Remove jumper SW2;



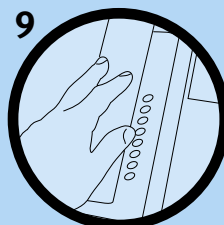
Lift the receiver on the first internal unit you want to program;



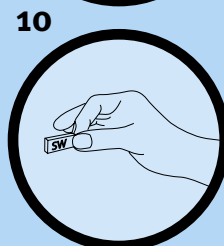
Press the door lock release and auxiliary buttons on the unit at the same time, holding them down until you receive the audible feedback confirming that the operation is complete and the audio connection to the entry panel is activated.



On the entry panel, press the call button you want to associate with the receiver.



Hang up;  
Repeat the procedure from point 7 on all remaining receivers;



Refit jumper SW2 to exit programming.

# B&N and colour video signal

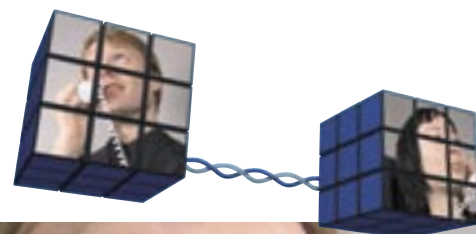


X1 provides high resolution for all colours. Black and white included.

X1 provides top audio-video quality and can handle B&W and colour signals without distinction. Again with just 2 wires, power supply included.



# Intercom feature



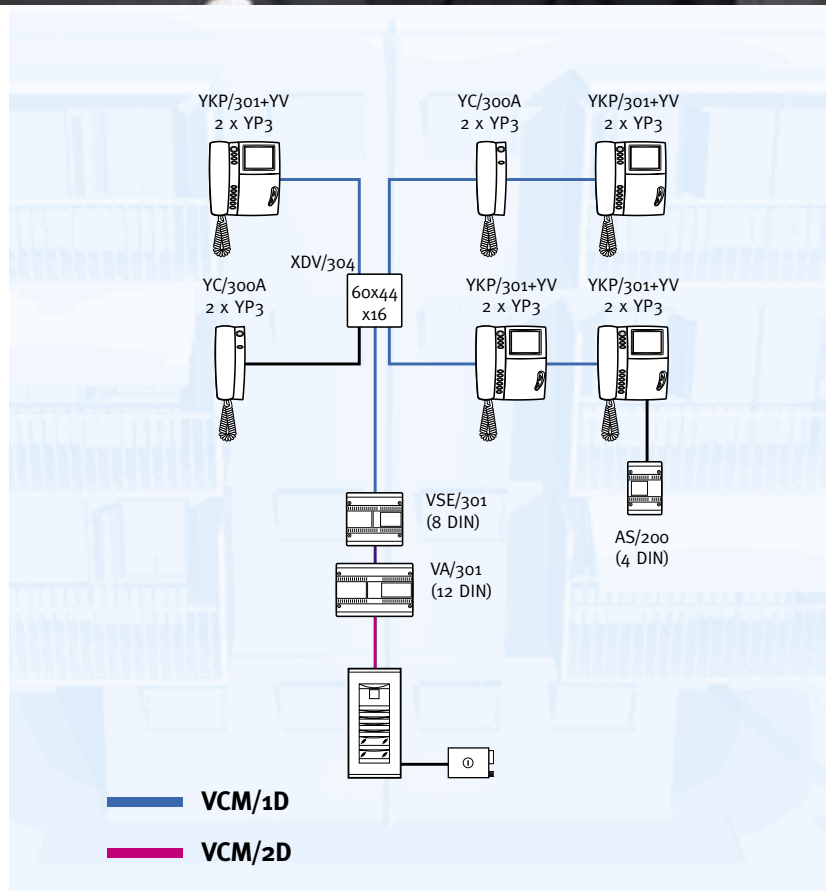
## X1 lets everyone have their say and can keep a secret

With the special 8DIN VSE/301 selector with built-in power supply, you can create one or more groups of intercom receivers without making alterations to the riser line and without making the rest of the system busy. With the LYNEA-series receivers and the new OPHERA monitor, can you manage groups of 6 or 8 intercom receivers.

### Programming for intercom receivers

- A - Set the VSE/301 selector for intercom units to programming mode by removing jumper SW1;
- B - Go to the receiver you want to program and press the call button you want to call it with;
- C - Repeat the procedure in point B for all the other receivers;
- D - Exit programming by refitting jumper SW1 on the VSE/301 unit.

*NOTE: program calls to the receivers before programming the VSE/301 unit.*



# X1 comes with full extras

The system gives you all the standard features without adding accessories and without altering the riser.



X1 gives you the following features without adding accessories:	
Secrecy of speech	Doorbell
Door lock release	Call waiting notification
Auxiliary services	Door lock release time control
Self-connection to entry panels	Busy system warning

### Self-connection to entry panels

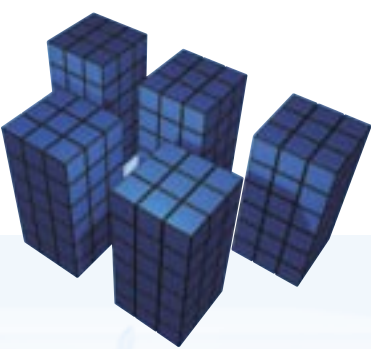
Since 4 video entry panels can be connected in series, you can use the monitor's self-connect feature to monitor all the entrances connected, switching between them in sequence, and activate the solenoid door lock release command and auxiliary services corresponding to the entrance selected each time, assuring unbeatable security

### Doorbell

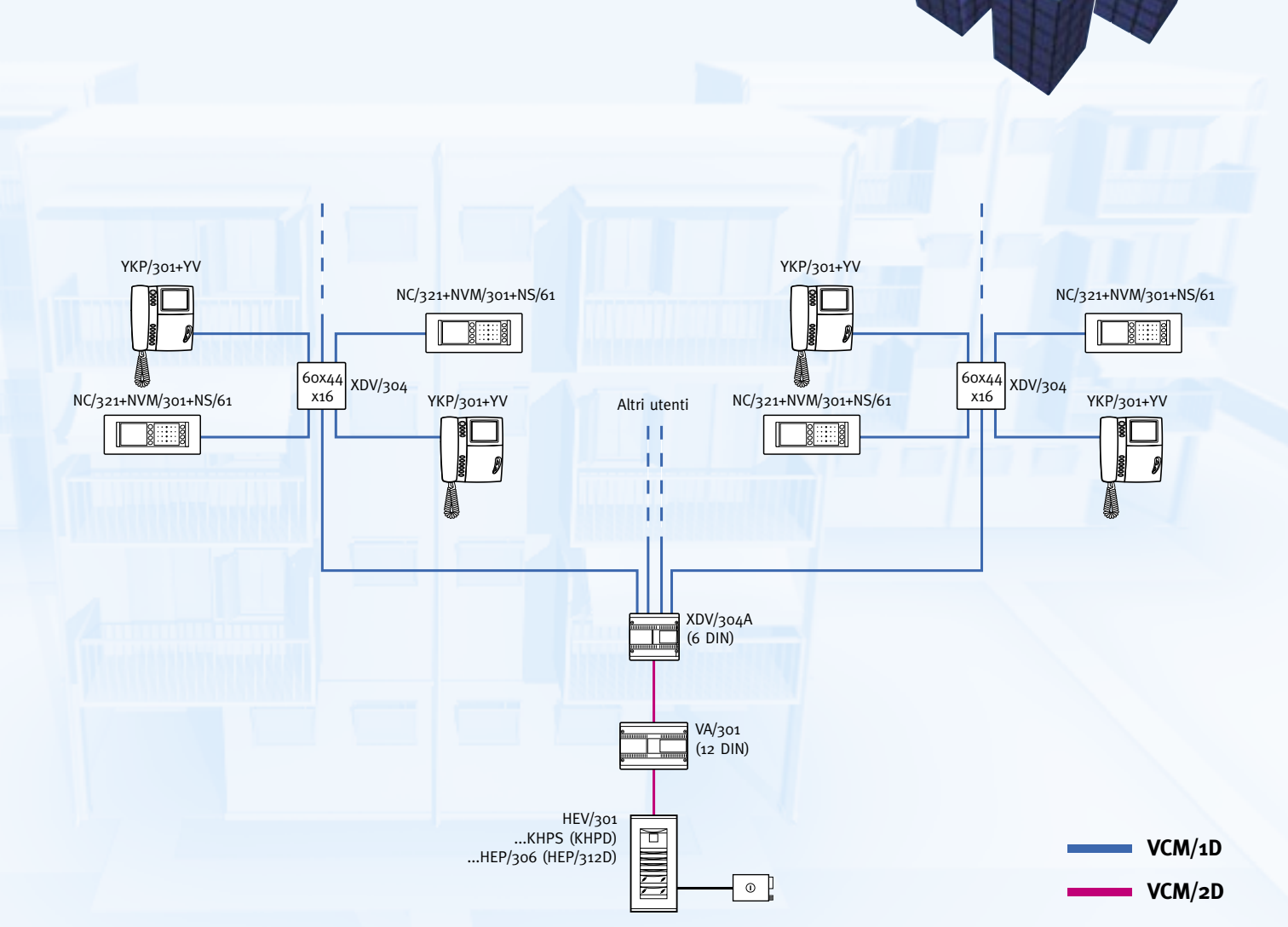
With no need for special bells or additional wires, you can have a different doorbell note to distinguish it from the entry panel call.



# Distribution over a number of risers



Video entry installation with 1 entry panel with traditional buttons and 4 video risers.



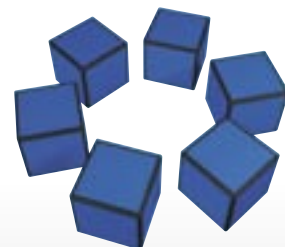
System composition	
Articolo	Quantità
YV	1-n
YKP/301	1-n
NVM/301	1-n
NC/321	1-n
NS/61	1-n
XDV/304	1-n
XDV/300A*	1-2
XDV/304A	1
VAS/100	1
VA/301	1
HEV/301	1
KHPS	0-1
HEP/306	0-n
KHPD	0-n
HEP/312D	0-n

\* da inserire dopo 10 XDV/304

## Distribution over a number of risers

If the signal has to be distributed over a number of risers, you need to use the amplified distributor XDV/304A (max. 30 XDV/304 + XDV/304A per system) expandable as illustrated.

# Bpt single-house kits



# Matchless simplicity, limitless expandability.

With the X1 kits, it doesn't matter whether you want to install an audio-video entry control system in a detached house or a multi-flat complex. The kits, made up of a Targha-series entry panel, VA/301 power supply unit and Lynea- or Nova-series receivers, allow for system expansion by just adding as many pushbutton panels and receivers as the system requires.



CODE	DESCRIPTION	KIT CONTENTS
<b>NOVAKIT/00 6262-0800</b>	<b>GREY NOVA-SERIES COLOUR MONITOR VIDEO ENTRY CONTROL KIT</b>	<ul style="list-style-type: none"> <li>- twin-channel audio module NC/321 GR</li> <li>- monitor module NVM/301 GR</li> <li>- recessed entry panel HEVC/301GH</li> <li>- 6-module recessed box NSI/6M</li> <li>- frame NS/61</li> <li>- grey thermoplastic cover plat NPT/6V GR</li> <li>- power supply unit VA/301</li> <li>- single KHPS extra push button</li> </ul>
<b>NOVAKIT/01 6262-1000</b>	<b>GREY NOVA-SERIES B/W MONITOR VIDEO ENTRY CONTROL KIT</b>	<ul style="list-style-type: none"> <li>- twin-channel audio module NC/321 GR</li> <li>- monitor module NVM/301 GR</li> <li>- recessed entry panel HEV/301GH</li> <li>- 6-module recessed box NSI/6M</li> <li>- frame NS/61</li> <li>- grey thermoplastic cover plat NPT/6V GR</li> <li>- power supply unit VA/301</li> <li>- single KHPS extra push button</li> </ul>
<b>NOVAKIT/02 6262-0700</b>	<b>WHITE NOVA-SERIES COLOUR MONITOR VIDEO ENTRY CONTROL KIT</b>	<ul style="list-style-type: none"> <li>- twin-channel audio module NC/321 BB</li> <li>- monitor module NVM/301 BB</li> <li>- recessed entry panel HEVC/301GH</li> <li>- 6-module recessed box NSI/6M</li> <li>- frame NS/61</li> <li>- grey thermoplastic cover plat NPT/6V GR</li> <li>- power supply unit VA/301</li> <li>- single KHPS extra push button</li> </ul>
<b>NOVAKIT/03 6262-0900</b>	<b>WHITE NOVA-SERIES B/W MONITOR VIDEO ENTRY CONTROL KIT</b>	<ul style="list-style-type: none"> <li>- twin-channel audio module NC/321 BB</li> <li>- monitor module NVM/301 BB</li> <li>- recessed entry panel HEV/301GH</li> <li>- 6-module recessed box NSI/6M</li> <li>- frame NS/61</li> <li>- grey thermoplastic cover plat NPT/6V GR</li> <li>- power supply unit VA/301</li> <li>- single KHPS extra push button</li> </ul>



CODE	DESCRIPTION	KIT CONTENTS
<b>OPHERAKIT/00 6262-1100</b>	<b>OPHERA SERIES 3.5" COLOUR MONITOR VIDEO ENTRY CONTROL KIT</b>	<ul style="list-style-type: none"> <li>- Ophera monitor module</li> <li>- HEVC/301GH recessed entry panel</li> <li>- VA301 power supply unit</li> <li>- single KHPS extra push button</li> </ul>
<b>OPHERAKIT/01 6262-1200</b>	<b>OPHERA BUILDING SERIES 3.5" COLOUR MONITOR VIDEO ENTRY CONTROL KIT</b>	<ul style="list-style-type: none"> <li>- Ophera Building monitor module</li> <li>- HEVC/301GH recessed entry panel</li> <li>- VA301 power supply unit</li> <li>- single KHPS extra push button</li> </ul>



CODE	DESCRIPTION	KIT CONTENTS
<b>LYNEAKIT/00 6262-0500</b>	<b>KIT VIDEOCITOFONICO SERIE LYNEA YV MONITOR BIANCO E NERO</b>	<ul style="list-style-type: none"> <li>- YV monitor module</li> <li>- YKP/301GH wall support</li> <li>- HEVC/301GH recessed entry panel</li> <li>- VA301 power supply unit</li> <li>- single KHPS extra push button</li> </ul>
<b>LYNEAKIT/01 6262-0600</b>	<b>KIT VIDEOCITOFONICO SERIE LYNEA YVC MONITOR COLORI</b>	<ul style="list-style-type: none"> <li>- YVC monitor module</li> <li>- YKP/301GH wall support</li> <li>- HEVC/301GH recessed entry panel</li> <li>- VA301 power supply unit</li> <li>- single KHPS extra push button</li> </ul>

# Receivers





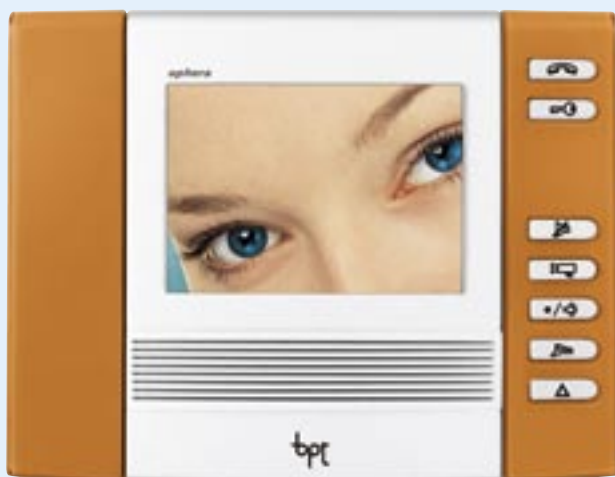
# Aesthetic lines

*For item composition options, refer to the X2 section of the 2005 general catalogue.*



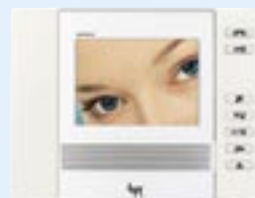
## **Nova:**

the exclusive flush-mounted model that delights with its modern, no-fuss style and small size. It fits in standard 3- or 6-module boxes.



## **Ophera:**

the new recessed hands-free intercom monitor with 3.5" colour display.



## **Lynea:**

it impresses with its extreme elegance and soft lines in a streamlined housing.

## Entry panels



# Aesthetic lines

For item codes and composition options, refer to the X2 section of the 2005 general catalogue.



## Targha:

entry panel offering the utmost modularity and functionality. Produced in anodized aluminium, it is easy to install and comes in both flush- and surface-mounted versions. With its small size and colour options (steel and Greyhound light grey), Targha has no trouble blending in with the style of any building.



## Digital Targha:

digital entry panel offering the utmost performance in the smallest possible package. It is an optimal solution for installations with a high number of users and can be flush- or surface mounted. The innovative backlit digital pushbutton panel and graphic LCD display help callers locate the user easily.



## Targha VR:

very hard-wearing tamperproof entry panel thanks to a stainless steel and polycarbonate front plate 4 mm thick. Its streamlined looks and extremely attractive design make it suitable for any architectural setting.



## Targha OT:

elegant and refined, the brass entry panel is the front plate that best suits highly prestigious, refined dwellings. The entry panel is mounted flush and units can also be teamed together side by side.


# X1. High technology cables.

The **VCM/1D** twisted pair, the **UTP/5** AWG24 cable, **telephone wire** of 0.28 mm<sup>2</sup> or the simple **two twisted**, tin-plated 1mm<sup>2</sup> wires.  
With the latest **Bpt** generation twisted pair, performance and signal quality are guaranteed, whatever transmission means is chosen\*.



**The VCM/1d cable**  
Consisting of two 1mm<sup>2</sup> twisted, tin-plated wires, this cable offers unbeatable protection against disturbance or oxidisation, guaranteeing perfect audio-video quality over time and over the maximum distances.








BPT CONNECTION CABLES			 VCM/1D
VCM/1D	6282-8000	cable with 2 1mm tin-plated wires in 100m reels	
VCM/1D/500	6282-8100	cable with 2 1mm tin-plated wires in 500m reels	
VCM/2D	6282-3300	cable with 2 wires + twisted pair in 100m reels	
VCM/2D/500	6282-3400	cable with 2 wires + twisted pair in 500m reels	

(\*) The maximum distances reachable vary according to the number of receivers connected and the maximum absorption of the system. The use of wires with different characteristics from those recommended will not guarantee the declared specifications; inasmuch, only the above mentioned cabling should be used.




# Product codes


LYNEA SERIES			 YV  YKP/301  NVM/301GR + NC/321GR  OPHERA
YKP/301	6282-7900	Video entry control system with wall support for video modules YV and YVC	
YV	6210-9200	4,5" b/w monitor module, in white, wall installation	
YVC	6210-9300	3,5" colour monitor, in white, wall installation	
YAL	6181-8100	Supplementary call loudspeaker	
YP3	6181-7900	Expansion call kit (3 push buttons)	
YPL	6181-8000	Interrupter Kit with lighted indicator and call volume control	
YKT/F	6282-5900	Table-top kit for YV+YKP/301, consisting of base and cable with RJ45 plug without socket	
NOVA SERIES			
NC/321 GR	6053-1400	Twin-channel receiver module, in grey	
NC/321 BB	6053-1300	Twin-channel receiver module, in white	
NVM/301 GR	6215-1200	2" LCD colour monitor module, in grey	
NVM/301 BB	6215-1100	2" LCD colour monitor module, in white	
NS/61	6282-8200	NVM/301 kit + NC/321 for 6-module recessed boxes	
NST/61	6282-8300	Table-top kit for Nova	
OPHERA			
OPHERA	6211-6600	3,5" colour monitor, twin-channel, flush mounted	
OPHERA/B	6211-6700	3,5" colour monitor, twin channel, flush mounted with 'privacy' option (in the 'Building' version)	
PHI	6282-8400	Recessed box	

POWER SUPPLIERS			 VA/301
VA/301	6270-4600	230V 50/60Hz Supplier, 12 DIN units low profile module	
AS/200	6140-4100	230V 15VA Supplier, 4 DIN units low profile module	
VAS/100.20	6270-3300	230V 60VA Supplier, 12 DIN units low profile module	
XAS/301	6270-4700	230 V additional supplier for signal regeneration	


VIDEO DISTRIBUTORS		
XDV/304	6282-1300	Video distributor with 4 miniaturized outputs. Size: 60x44x16 mm
XDV/300A	6282-2000	Miniaturised video amplifier. Size: 60x44x16mm
XDV/304A	6282-5800	Video distributor with 4 amplified outputs. 6 DIN units low profile module
SELECTORS		
VSE/301	6274-7400	Selector for intercom systems, integrated power supply, 8 DIN units low profile module
RELAY UNITS		
VLS/101	6281-6200	Relay unit, 4 DIN units module
VLS/400	6281-5800	Relay unit, 4 DIN units module
VLS/300	6282-5400	Remote actuator
OTHER UNITS		
AC/300	6181-7600	Call adaptor
IAV/300	6282-5700	Audio visual interface, 230 V ca 50/60Hz power supply
RC/300	6181-7500	Call Repeater




XDV/304



XDV/304A






XDV/300A



CONNECTION CABLES			 VCM/1D
VCM/1D	6282-8000	2 1mm tin-plated wires in reels of 100m	
VCM/1D/500	6282-8100	2 1mm tin-plated wires in reels of 500m	
VCM/2D	6282-3300	2 wires + twisted pair in reels of 100 m	
VCM/2D/500	6282-3400	2 wires + twisted pair in reels of 500 m	




The references highlighted in blue are typical of the X1 system.  
The other codes are the same as those used on the X2 system.

# Product codes

ENTRY PANELS IN THE TARGHA SERIES			
HEC/301 ST	6009-5400	Intercom entry panel with 1 push button, in steel	
HEC/301 GH	6009-9200	Intercom entry panel with 1 push button, in light grey	
HEP/306 ST	6009-5200	Entry panel with 6 push buttons, in steel	
HEP/306 GH	6009-9300	Entry panel with 6 push buttons, in light grey	
HEP/312D ST	6009-5300	Entry panel with 12 push buttons, in steel grey	
HEP/312D GH	6009-9400	Entry panel with 12 push buttons, in light grey	
HEV/301 ST	6202-1000	Video intercom entry panel with 1 push button, b/w CCTV, in steel	
HEV/301 GH	6202-3800	Video intercom entry panel with 1 push button, b/w CCTV, in light grey	
HEVC/301 ST	6202-1200	Video intercom entry panel with 1 push button, colour CCTV, in steel	
HEVC/301 GH	6202-3900	Video intercom entry panel intercom monitor with 1 push button, colour CCTV, in light grey	
HET/301 ST	6202-1100	Video intercom entry panel with 1 push button, external CCTV, in steel	
HET/301 GH	6202-4000	Video intercom entry panel with 1 push button, external CCTV, in light grey	

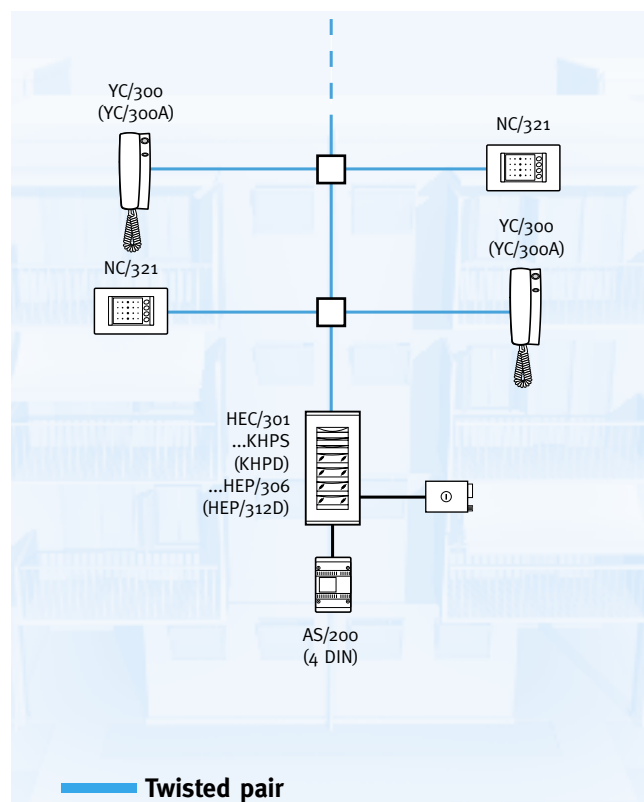
DIGITAL ENTRY PANELS			
HAC/X2LR	6202-8400	Interface module for digital entry panel	
HAC/300LR ST	6009-5100	Digital entry panel with name file, in steel	
HAC/300LR GH	6009-9100	Digital entry panel with name file, in light grey	
HAC/300LR VR	6009-7400	Digital entry panel with name file, tamperproof version	

TAMPERPROOF ENTRY PANELS			
HEC/301 VR	6009-6700	Entry panel with 1 push button	
HEC/302 VR	6009-6800	Entry panel with 2 push buttons	
HEC/303 VR	6009-6900	Entry panel with 3 push buttons	
HEC/304 VR	6009-7000	Entry panel with 4 push buttons	
HEP/306 VR	6009-7100	Entry panel with 6 push buttons	
HET/301 VR	6202-2000	Entry panel for external CCTV with 1 push button	
HET/302 VR	6202-2100	Entry panel for external CCTV with 2 push buttons	
HET/303 VR	6202-2200	Entry panel for external CCTV with 3 push buttons	
HET/304 VR	6202-2300	Entry panel for external CCTV with 4 push buttons	
HEV/300 VR	6202-1400	Video intercom entry panel with no push buttons and b/w CCTV	
HEV/301 VR	6202-1500	Video intercom external entry panel with 1 push button and b/w CCTV	
HEV/302 VR	6202-1600	Video intercom entry panel with 2 push buttons and b/w CCTV	
HEVC/300 VR	6202-1700	Video intercom entry panel with no push buttons and colour CCTV	
HEVC/301 VR	6202-1800	Video intercom entry panel with 1 push buttons and colour CCTV	
HEVC/302 VR	6202-1900	Video intercom entry panel with 2 push buttons and colour CCTV	

ACCESSORIES			
HBP/M	6009-7500	Metal wall box	
HTS GR	6009-0600	Frame and wall box, in grey	
HTS GH	6010-1700	Frame and wall box, in light grey	
HTI	6009-9600	Wall box, in light grey	
HTS VR	6009-6600	Reinforced tamperproof wall box	
HTT	6009-9700	Front plate recessed frame, in light grey	
KHPS	6181-4100	Single push button kit	
KHPD	6181-4200	Double push button kit	
KHSO	6181-6500	'Busy' kit – takes up the space of a push button	
KHIN	6181-6400	Information kit – takes up the space of two push buttons	
VZS/308C	6282-2400	Coded interface for 8 additional push buttons	

# Audio-only and audio-video system diagrams

**Multi family audio-only system with individual receivers featuring handsets, hands-free function and 1 entry panel.**

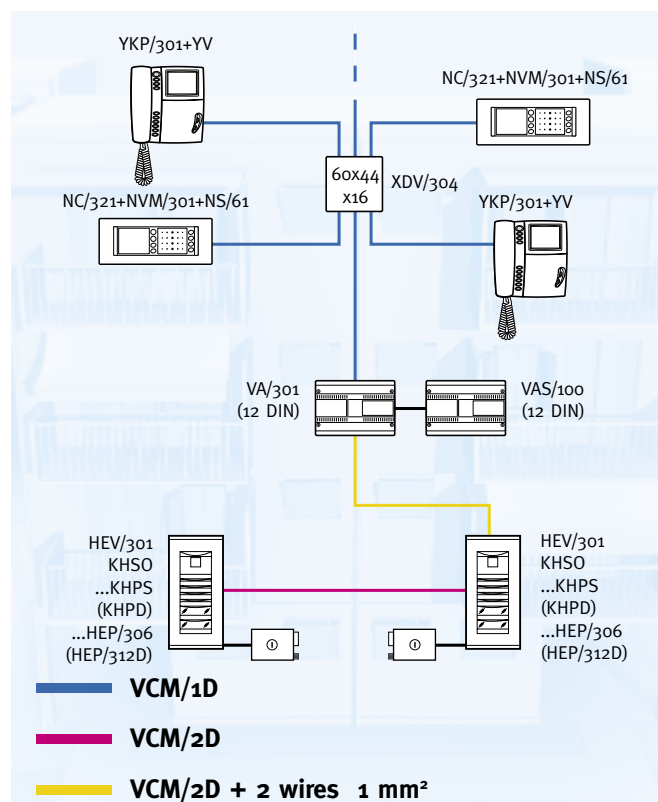


AUDIO ENTRY INSTALLATIONS				
	NUMBER OF ENTRY PANELS			
	1	2	3	4
From 1 to 64 handsets with button front plates	n.1 AS/200	n.2 AS/200 or n.1 VAS/100.20	n.3 AS/200 or n.1 VAS/100.20 + n.1 AS/200	n.4 AS/200 or n.2 VAS/100.20

Summary table giving the number of power supply units required based on the number of entry panels and number of receivers.

System composition	
Article	Quantity
YC	1-n
NC/321	1-n
AS/200	1
HEC/301	1
KHPS	0-3
HEP/306	0-n
KHPD	0-n
HEP/312D	0-n

**Audio-Video entry installation with 2 entry panels with traditional push buttons and one video riser with more than 8 video receivers.**



VIDEO ENTRY INSTALLATIONS				
1 VA/301 included	NUMBER OF ENTRY PANELS			
	1	2	3	4
From 1 to 64 monitors with button front plates	n.0	n.1 VAS/100.20	n.1 VAS/100.20	n.2 VAS/100.20

Summary table giving the number of VAS/100.20 power supply units required based on the number of entry panels and number of receivers.

System composition	
Article	Quantity
YV	1-n
YKP/301	1-n
NVM/301	1-n
NC/321	1-n
NS/61	1-n
XDV/304	1-n
XDV/300A*	1-2
VAS/100	1
VA/301	1
HEV/301	1
KHSO	2
KHPS	0-2
HEP/306	0-n
KHPD	0-n
HEP/312D	0-n

\* to be installed after 10 XDV/304



**BPT SpA**  
*Administrative office and plant:*  
Via Roma, 41  
30020 Cinto Caomaggiore (VE)  
Tel. +39 0421/241241  
Fax +39 0421/241053

*Head office:*  
Via Stazione, 26  
33079 Sesto al Reghena (PN)  
[www.bpt.it](http://www.bpt.it)  
[info@bpt.it](mailto:info@bpt.it)

Company subject to the  
management activity  
of BCOMPANY S.p.A.  
Iscl. Reg. Imp. 02266190301

